



PRODUCT FACT SHEET
Union Series - Stool
2026

FRAMA

UNION SERIES - STOOL

Designed by Michael Antrobus
2026

FRAMA

PRODUCT DESCRIPTION

Stool / Ottoman

ENVIRONMENT

Indoor

MATERIAL

Frame: Aluminium (AW6061) - Hand brushed

Seat: 100% linen - 720gsm

PRODUCTION PROCESS

The aluminium frame is bent and partly welded into place, then assembled together with screws. The replaceable seat and backrest are assembled with screws to the frame.

GLIDERS

PA66 / Polyamide

PACKAGING DIMENSIONS

H: 45cm / 17.7in, W: 63.5cm / 25in,

D: 62.5cm / 24.6in

WEIGHT

STRENGTH, DURABILITY AND SAFETY TESTING

EN 16139 L1

EN 1022

IMPACT

Durable aluminium makes this chair durable and long lasting for indoor use. Designed for disassembly, making it easier to repair, renovate, pass on, and responsibly recycle at end of life.

MANUFACTURER

Produced in PRC by Nine United Limited

STOCK ITEMS

Available in stock

CLEANING INSTRUCTIONS

Please see our Maintenance & Care instructions

REPAIR, DISPOSAL AND REUSE

In case of repair and disposal the chairs can be disassembled into two parts (structure and seat part). The base and all other metal parts can be recycled. Check local regulations for recycling options and whether there is potential for reuse.

DIMENSIONS

W: 61cm / 24in

H: 40.6cm / 16in

D: 38cm / 15in

Seat H 30.5cm / 12in

Seat D 38cm / 15in



ALUMINIUM - LINEN SEAT

Hecht-Johansen

UNION SERIES - STOOL

Designed by Michael Antrobus
2026

FRAMA

PRODUCT DESCRIPTION

Stool / Ottoman

ENVIRONMENT

Indoor / Outdoor

MATERIAL

Frame: Aluminium (AW6061) - Hand brushed

Seat: Sling fabric (Woven Vinyl-Coated Polyester)

PRODUCTION PROCESS

The aluminium frame is bent and partly welded into place, then assembled together with screws. The replaceable seat and backrest are assembled with screws to the frame.

GLIDERS

PA66 / Polyamide

PACKAGING DIMENSIONS

H: 45cm / 17.7in, W: 63.5cm / 25in,

D: 62.5cm / 24.6in

WEIGHT

STRENGTH, DURABILITY AND SAFETY TESTING

EN 16139 L1

EN 1022

IMPACT

Durable aluminium and sling fabric makes this chair durable and long lasting for outdoor use.

Designed for disassembly, making it easier to repair, renovate, pass on, and responsibly recycle at end of life.

MANUFACTURER

Produced in PRC by Nine United Limited

STOCK ITEMS

Available in stock

CLEANING INSTRUCTIONS

Please see our Maintenance & Care instructions

REPAIR, DISPOSAL AND REUSE

In case of repair and disposal the chairs can be disassembled into two parts (structure and seat part). The base and all other metal parts can be recycled. Check local regulations for recycling options and whether there is potential for reuse.

DIMENSIONS

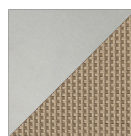
W: 61cm / 24in

H: 40.6cm / 16in

D: 38cm / 15in

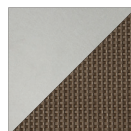
Seat H 30.5cm / 12in

Seat D 38cm / 15in



ALUMINIUM - SLING SEAT

Phifertex Plus 42x12 - Stucco



ALUMINIUM - SLING SEAT

Phifertex Plus 42x12 - Coffee